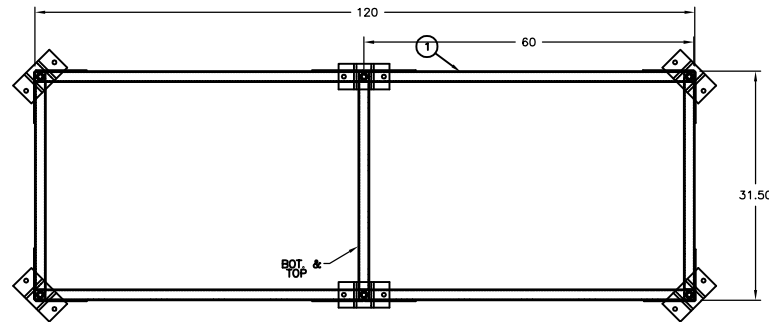
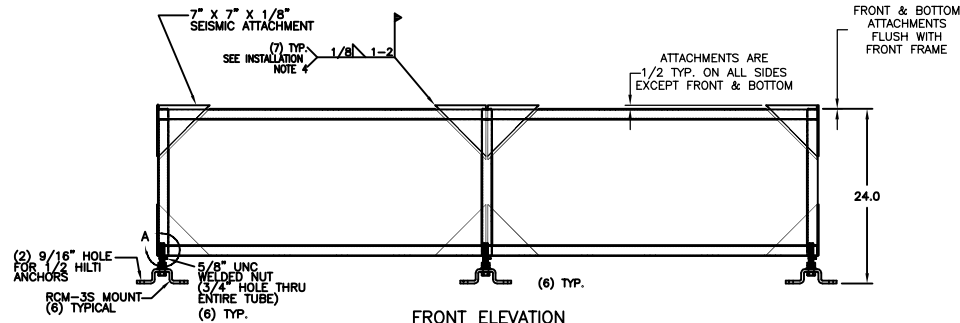


186R-103472 REV.: 1

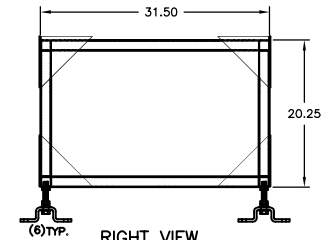
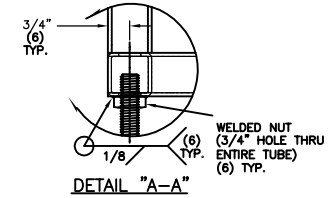
| REV. | DESCRIPTION | DATE | BY |
|------|-------------|------|----|
|      |             |      |    |



PLAN VIEW



FRONT ELEVATION



RIGHT VIEW

ILLUSTRATION SHOWN WITHOUT TURNING VANE  
& T.V. SUPPORT COMPONENTS

## NOTES:

- FLOORSTANDS HAS BEEN DESIGNED TO WITHSTAND A MAX. SEISMIC LOAD OF 1.0 G'S (UBC ZONE 4, Z=0.4).
- ANCHORS MUST BE EMBEDDED AT LEAST 3 1/2 " INTO THE STRUCTURAL SLAB.
- SPECIAL INSPECTION OF THE ANCHOR BOLTS IS REQUIRED FOR ALL SEISMIC SPECIFICATIONS GREATER THAN 0.5 G'S.
- SUPPORTED UNIT MUST BE FASTEN OR WELDED TO FLOORSTAND AS REQ'D. PER CODES TO MEET SEISMIC RATING.
- TURNING VANE IS SHIPPED LOOSE AND MAY REQUIRE SOME FIELD CUT DURING FIELD INSTALLATION
- DIMENSION IS FROM INSIDE (EDGE TO EDGE) OF ATTACHMENT PLATES
- B.O. = BY OTHERS (NOT BY THE VMC GROUP)
- FRAME SHALL BE PAINTED THE VMC GROUP COLOR.
- INSTALL PER INSTALLATION INSTRUCTION FORM 802009;

OTHER MATERIALS, COMPOUNDS, OR FINISHES WITH EQUAL OR SUPERIOR  
PROPERTIES MAY BE SUBSTITUTED AS THEY BECOME AVAILABLE.

## CERTIFIED FOR:

JOB NAME: \_\_\_\_\_

CUSTOMER : \_\_\_\_\_

CUSTOMER P.O.: \_\_\_\_\_

SALES ORDER: \_\_\_\_\_

## MODEL FLOORSTAND NON-ISOLATED FRAME WITH RCM-3S ISOLATOR



**THE VMC GROUP**  
The Power of Together  
Bloomington, NJ 07403  
Houston, TX 77041

SCALE :

NONE

SHEET:

DRAWING NO.:

REVISION

